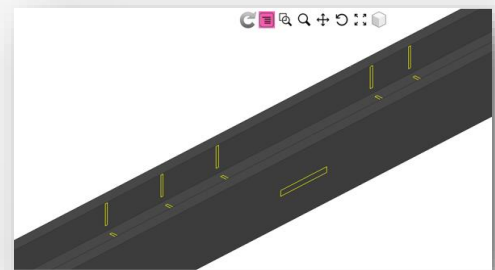


After six months of work by our R&D team, the new version Steel Projects PLM 2020 is now available! With this first major version for the year 2020, you will once again benefit from numerous advances, primarily designed to save you time, maximize efficiency and productivity!

New features:

✓ **CAD-CAM**

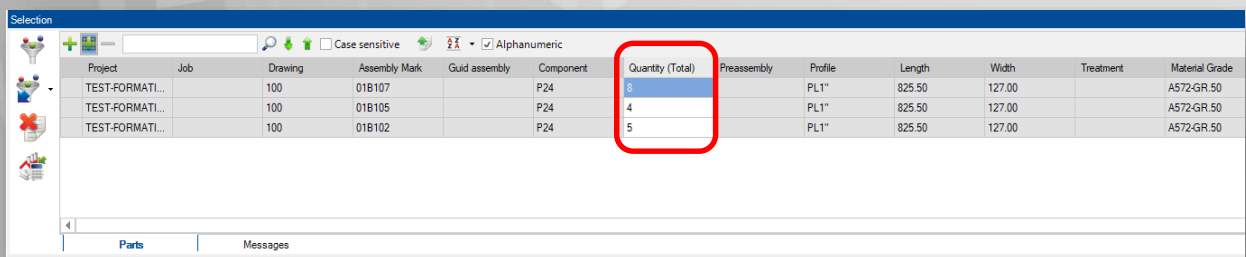
- Scribing improvements:
 - Scribe inside the flanges with the new tool (pencil) Ficep available →
 - Scribe stiffeners related to the positions of secondary parts
 - Alert message when scribing of parts is potentially different in different assemblies



- Improvement of the haunch management without the nesting module
- Improved 3D visualization: all complex cases are now handled

✓ **Project Manager**

- Additional checking tests during the verification of the drawings (marking and scribing)
- Partial quantity management in fabrication jobs:



Project	Job	Drawing	Assembly Mark	Guid assembly	Component	Quantity (Total)	Preassembly	Profile	Length	Width	Treatment	Material Grade
TEST-FORMATL...		100	01B107		P24	8		PL1"	825.50	127.00		A572-GR.50
TEST-FORMATL...		100	01B105		P24	4		PL1"	825.50	127.00		A572-GR.50
TEST-FORMATL...		100	01B102		P24	5		PL1"	825.50	127.00		A572-GR.50

- GUID management at the level of parts in fabrication jobs, nestings and traceability
- Possibility to reopen a completed project
- Selection of parts according to the delivery date of phases/plans (Addition of a criterion in the selection window)

✓ **Section nesting**

- Explosion of the quantities of parts already nested allowing unitary rotations or symmetries
- New nesting method taking into account the difficulty to place a piece according to the ratio piece length/bar length (Categories)
- Display of phases, jobs and GUIDs if necessary
- New alert messages related to the unloading capabilities of the machines

✓ **Plate nesting**

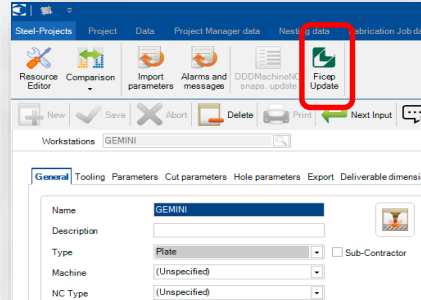
- Taking into account of ActCut version 3.10

✓ Interface

- Improved forecasted times thanks to the GTIMER Ficep simulation
- Integration of new options in the simulation of automatic handling systems
- Enhancement of the PNI interface with the integration of new fields

✓ Production Manager

- Complete overhaul of the production analysis: monitoring of tooling operations, bars, parts, operators, Gantt, traceability, etc.
- Analysis available on each structural element (case, plan, assemblies, secondary parts, fabrication jobs)
- Tools to retrieve Ficep machine parameters live (For example, new notching or milling macros made available by Ficep) →



✓ Workshop Assistant (Android)

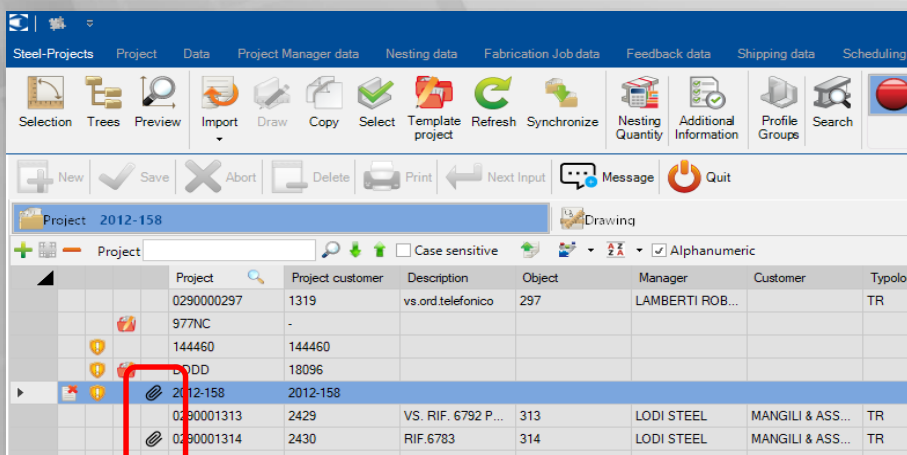
- Finalization of the shipping module: creation and control of shipments, delivery notes and packages on the mobile application

✓ Workshop Assistant (PC)

- Simplified selection to switch workstation (no more logout required)
- Creation, tracking and printing of packages
- Printing of labels for parts and remnants at the exit of the machines. Barcode and QR codes available

✓ Miscellaneous

- History of Steel Projects PLM's internal messaging
- LDAP management for the creation of user logins
- Addition a 'paper clip' icon if an attached document is available:



For any questions regarding Steel Projects PLM 2020, get in touch:

support@steelprojects.com



www.SteelProjects.com