

Release note April 2022

The version 2022 of Steel Projects PLM is now available! This first major release of the year introduces many new features that will help you facilitate your daily work!

This document is a list of all the latest features added to the version. Note that they are only available if the related licenses have been purchased in the first place.

✓ Data

- New profile category managed: steel gratings (for platforms), tread plates, full bars (Square or rectangle) and hexagons.
- Management of new chamfers for the new Ficep ENERGY machine for wind turbines.
- Rubric : new section to categorize the different transactions in the software (Machine, Operation, Feedback type).

✓ Imports from the detailing office

- New possibility to import nomenclatures in Excel or CSV formats. Compatibility with DSTV, STEP and AutoCAD files associated to those files.
- New options for the AutoCAD import: Toolbox, profile dimensions checks, explode function on a selection.
- Compatibility with Tekla Structures 2022 and its new possibilities: management of blind holes, tapping and hole references.

✓ Project management

- Tool transform option now available for all types of profiles.
- New tool to trim parts available →
- New options available for auto marking sub assemblies.

✓ Section nesting

- Possibility to bundle squared tubes unitary for handling systems.
- Possibility to display the total length of parts and bars (stocks) per profile before nesting.
- Detailed description of tooling by sides for each nesting to better calculate the tool changes.

✓ Plate nesting

- Possibility to manage stock priorities.

✓ Stock and purchasing management

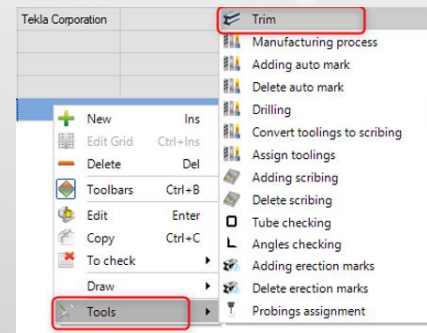
- Possibility to visualize stock movements in the next few weeks.

✓ Interfaces with external systems

- Enrichment of the data exchangeable with the PNI interface.

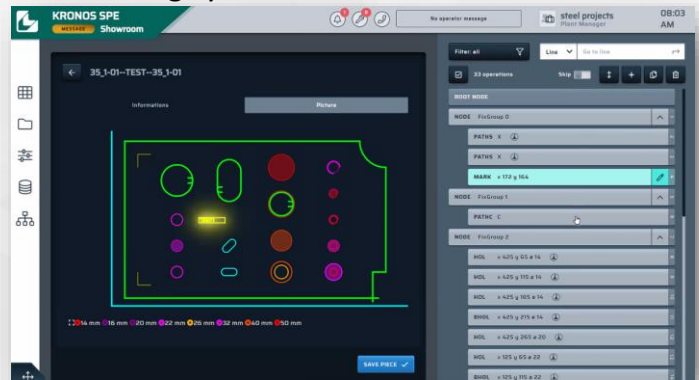
✓ Production planning and preparation

- Fabrication job builder : new section for multi profile.
- Management of internal sub-contracting between two companies.



✓ **CNC automation**

- Improvement of the DSTV export to integrate with machines of all brands.
- New version of the AutoCAD export to connect with external plate nesting software such as Sigmanest.
- Modernization of the management of automatic handling systems
- Polaris: new Ficep CNC (replacing Pegaso) available from June 2022 on Kronos machines, soon on others →
- New information available on WinCN:
 - Name of the customer
 - Version of WinCN
 - Version of post-processors



✓ **Management of manual workstations (Windows)**

- Partial stops now available for the Windows version.
- Self controlling messages to be configured to add steps for checking.



✓ **Management of manual workstations (Android)**

- Improvements on the management of attached documents: visual indicators that inform about the documents already attached. Possibility to attach pictures or documents.
- Better management of lists via barcode scanning: selected items flash and are automatically displayed at the top of the list.
- New options to scan "unit quantities" and scan multiple quantities.

✓ **Shipping management (Android)**

- Possibility to increase product quantities (in percentages) before production.
- Standard organization of shipments available for standard projects.
- Package creation: multiple quantities configurable.

✓ **Live production monitoring (Android)**

- Improvement of access to saw information (blade life): button available to access information.
- Improvement in the translation of machine error message feedback: better transcription of alarm descriptions and messages.

✓ **Production analysis**

- Analysis of employees' presence: Manual input available.
- Analysis by GUID now available.

✓ **Miscellaneous**

- Compatibility of Steel Projects PLM 2022 with Windows 11.



For any questions about Steel Projects PLM 2022 or to schedule your installation, please contact us : Support@SteelProjects.com

www.SteelProjects.com

