



## Steel Projects PLM 2023: Release note (May 2023)

The version 2023 of Steel Projects PLM is now available! This first major release of the year introduces many new features that will help make your daily work easier! This document is a list of all the latest features added to the release. Please note that they are only available if the corresponding licenses have been acquired in the first place.

### ✓ Data

- New form available for an easier profile management.
- Improved management of miscellaneous products such as bolts for example.



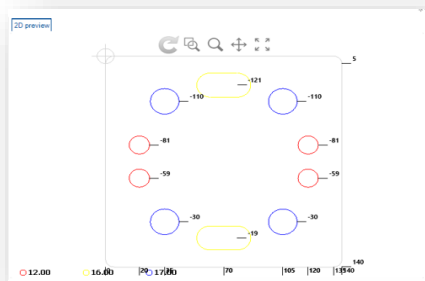
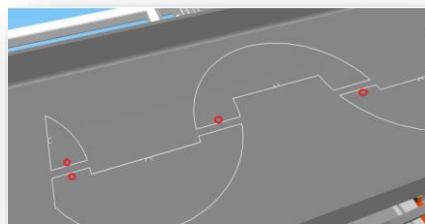
### Imports from the detailing office

- Improved import of lists in Excel format to import product nomenclatures.
- Possibility to import sloped holes coming from AutoCAD (DXF/DWG).
- Various improvements of the IFC format with the software Bocad and Cype.
- Compatibility with the 2023 version of Tekla Structures.
- Additional information available with the STEP import: Cut, Cope, Depth hole, Nomenclature: name of the part, Quantity, Speed, Thickness of the web.
- Possibility to input a date to a revision while being imported.



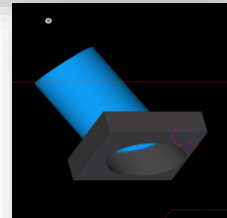
### Project management

- Improved management of lead cuts:
  - ✓ Calculations of lead ins and outs positions on internal contours.
  - ✓ Management of cuts with chamfers (cutting angles).
- Brand new visualization of parts in 2D including new options such as zoom ins and outs.
- Improved management of subcontracting : by piece and operation.
- Improved management of welded beams to simplify their creations.
- Possibility to assign treatments and painting to an assembly.
- Possibility to transform cuts into scribing lines to facilitate manual sawing.
- Possibility to import welds from CAD or input them manually if not imported.
- Possibility to add specific information fields on request in the 'Additional information' tab.



### Plate nesting

- Management of sloped holes.
- Better management of parts without macros and only leadcuts.
- Improvement of palletizing.
- Possibility to manage bevelling differently according to the machine.



### Stock and purchasing management

- Alerts, information and messages now available in the top right-hand corner.
- New ergonomics of the 'Inventory' section.
- Addition of 'Length' and 'Thickness' columns in the 'Reception' section.
- Management of certificates with different heat numbers.



### **Interface with external systems**

- Various improvements of the automatic interface with Strumis.
- Various improvements of the PNI interface (available via XML imports and exports, or via web service).



### **Production planning and preparation**

- Possibility to merge several fabrication jobs.
- Possibility to determine deadlines for fabrication jobs and get alerts if they are outdated.



### **Automation**

- DSTV export: addition of automatic marking information.
- New parameters available for automatic handling.
- Ongoing improvements of Polaris (new Ficep CNC).



### **Management of manual workstations (Android version)**

- Visualization of the total durations input by operators during the day.
- Compatibility with Android 13.
- Possibility to modify the lengths of the bars in metric or imperial.



### **Shipping management**

- Possibility to create empty packages/packages to prepare a transport.



### **Shipping management (Android)**

- Parcel/package dimensions available in metric or imperial.



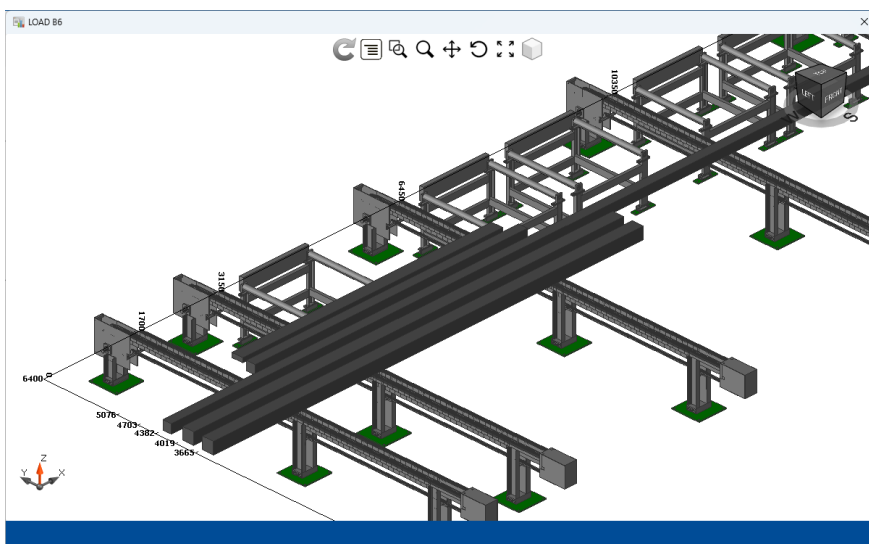
### **Live production monitoring**

- Possibility to visualize pieces live on loading and unloading benches (Ficep machines only) →



### **Traceability management**

- Possibility to automatically generate traceability folders after a project is completed.



If you have any questions about Steel Projects PLM 2023 or would like to schedule your installation, contact us: [Support@SteelProjects.com](mailto:Support@SteelProjects.com)

[www.SteelProjects.com](http://www.SteelProjects.com)

