



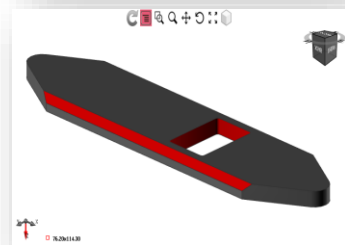
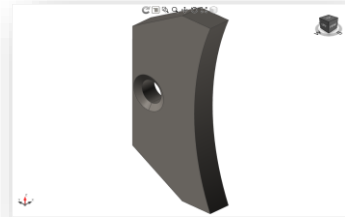
Steel Projects PLM 2023i: Release note (October 2023)

The version 2023i of Steel Projects PLM is now available! This second major release of the year introduces many new features that will help make your daily work easier and improve your user experience! This document is a list of all the latest features added to the release. Please note that they are only available if the corresponding licenses have been acquired in the first place.



✓ Imports from the detailing office

- New possibility to import Tecnometal nomenclatures.
- Improvement of the DSTV import: bulb flats are now managed.
- Improvement of the IFC import: possibility to include various products (bolts, etc.) and include DSTV's as well in the process (for particular cases).
- Compatibility with Tekla Structures 2023: many improvements made to manage even more types of pieces and assemblies.
- Improvement of the STEP import: flares and chamfers are now managed →
- New parameters available to manage the sawing macros to better chose between macros or leadcuts.



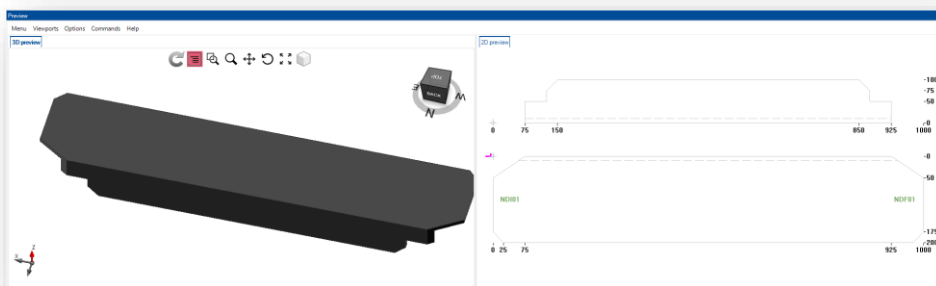
✓ Feasibility checks

- More accuracy for the checking of sawing macro during imports.
- More complete checking carried out: all errors are displayed and not only the first one found.



✓ Project management

- Improved display of 2D and 3D visualizations (for notch for example).



- Improved lead cut management for a better final result (start lead ins in the flange).
- Drilling tool option: changes can now be applied on one side if necessary.
- Possibility to assign tooling by codes.
- Creation of a grid dedicated to products, separated from the pieces grid for better visibility.



✓ Section nesting

- Improved management of trim cuts.



✓ Plate nesting

- Integration of Almacam.



- ✓ **Interface with external systems**
- Supervision information now included in the PNI format: possibility to send machines' feedback information back to customers' customized dashboards.



- ✓ **Automation**
- Ongoing improvements of Polaris (new Ficep CNC soon available with Tipo G and Xblade models).



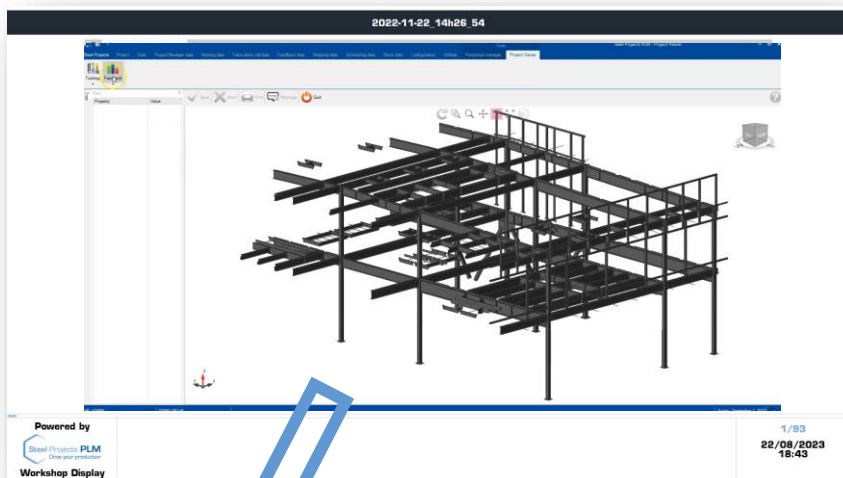
- ✓ **Management of manual workstations (Android version)**
- Today's mood option as a new management tool: possibility for employee to send back to the office their mood of the day →



- ✓ **Shipping management**
- Better visibility of products.



- ✓ **Live production monitoring**
- New major feature: Workshop Display. Configure any information or visual that you want to share with your team in the office, and for how long for each →



- ✓ **Production analysis**
- Standardization of time display format for greater clarity.



- ✓ **Traceability management**
- Possibility to customize traceability folders.



If you have any questions about Steel Projects PLM 2023i or would like to schedule your installation, contact us: Support@SteelProjects.com

www.SteelProjects.com

