



Steel Projects PLM 2022i: Release note (November 2022)

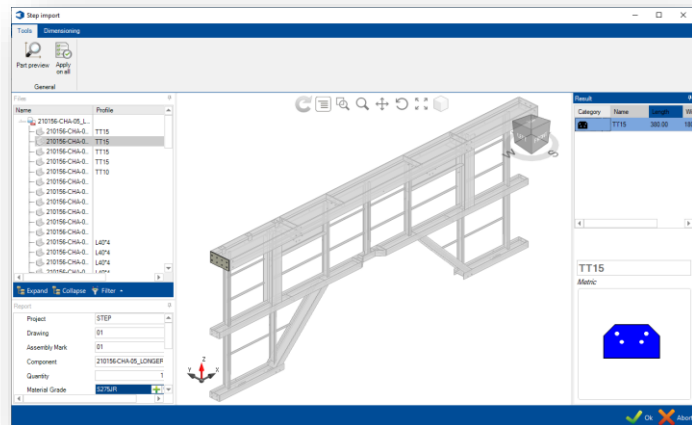
The version 2022i of Steel Projects PLM is now available! This second major release of the year introduces many new features that will help make your daily work easier! This document is a list of all the latest features added to the release. Please note that they are only available if the corresponding licenses have been acquired in the first place.

✓ Data

- Possibility to define assembly categories according to different parameters (dimension, master or secondary part) and to route them according to these parameters (manual station or welding robot for example).
- Improved ergonomics for profile management.
- Management of internal lead cuts: possibility to visualize lead ins and outs and adjust them, if necessary, from this same window.
- Management of lead diameters for macros (processing, time calculation, handling).

Imports from the detailing office

- Improved imports of nomenclatures (total quantities).
- DSTV import: possibility to automatically delete all imported files.
- Improved import of cuts: if the cut angle is greater than the maximum value defined, the cut is transformed into a scribing or lead cut depending on the parameters.
- Complete overhaul of STEP import: ease to use, management of assemblies, etc. →



Project management

- Possibility to input a cutting macro when creating a part (for service centres).
- New options available for scribing management: for example, mark only master parts if necessary (depending on the machines available).
- Possibility of modifying lead cuts in the drawing editor.
- Management of notch nibbling via a tool.
- New criteria available in the search bar.
- Possibility of assigning assembly categories by project.

Section nesting

- Improved bundle management by profile.
- Multi-selection now available in the nesting settings (ergonomics).
- New status available in deliverable length options: optional.
- Availability of forecast times for the Ficep Nozomi robot →

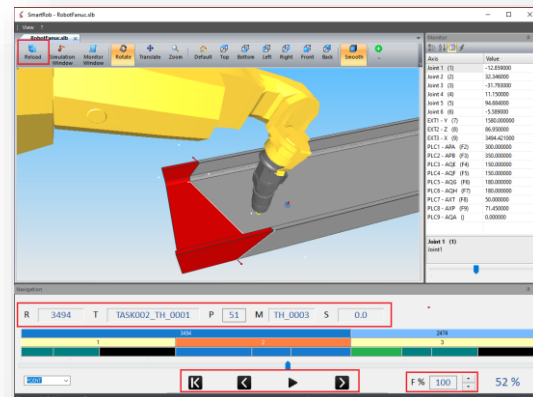




Plate nesting

- Possibility of making splicing.



Stock & purchasing management

- Easy switch between metric and imperial systems.
- Possibility to send emails from the software.
- Possibility to enter multiple bundles per heat number.
- Possibility to define different bundles on the same line.



Interfaces with external systems

- Improved interface with Strumis.
- Improved interface with Tekla PowerFab.



Production planning & preparation

- Fabrication job checking: manual choice possible to define the checking.
- Forecast times: choose to calculate them or not in order to save time.



Automation

- Possibility for the operator to modify the routing directly from the routing created in the software.



Management of manual workstations (Windows)

- Possibility of assigning operations to phases of a project (also available on Android).



Management of manual workstations (Android)

- Possibility to choose the front or rear camera.
- Possibility to scan a part and place it on top of the screen.
- New barcodes available for drawings and assemblies.
- Availability of attendance mode.



Shipping management

- Management of packages in multiple quantities.



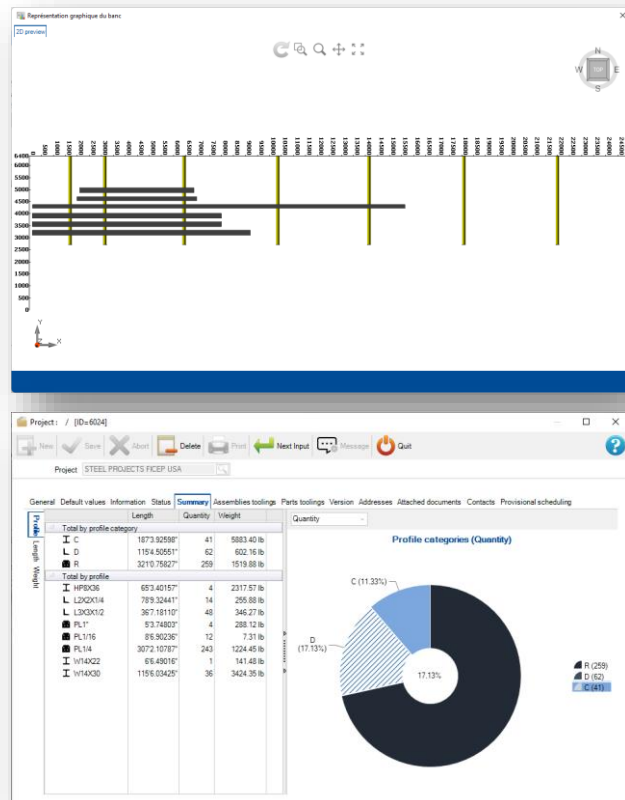
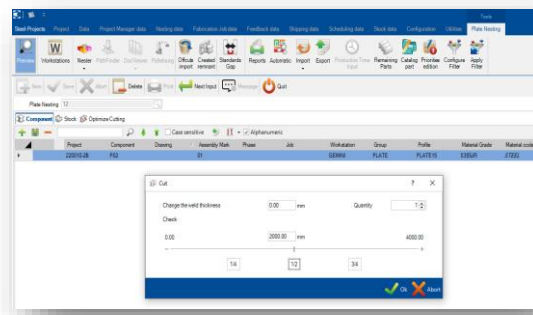
Live production monitoring

- Taking into account the loading and unloading in progress on the machines.
- Possibility of viewing them in 2D → see photo above.



Production analysis

- Redesign of all the software's analysis tools: more modern designs, dynamic graphics for a better user experience →



If you have any questions about Steel Projects PLM 2022i or would like to schedule your installation, contact us: Support@SteelProjects.com

